
Diagnostic program for VMS and Q&A

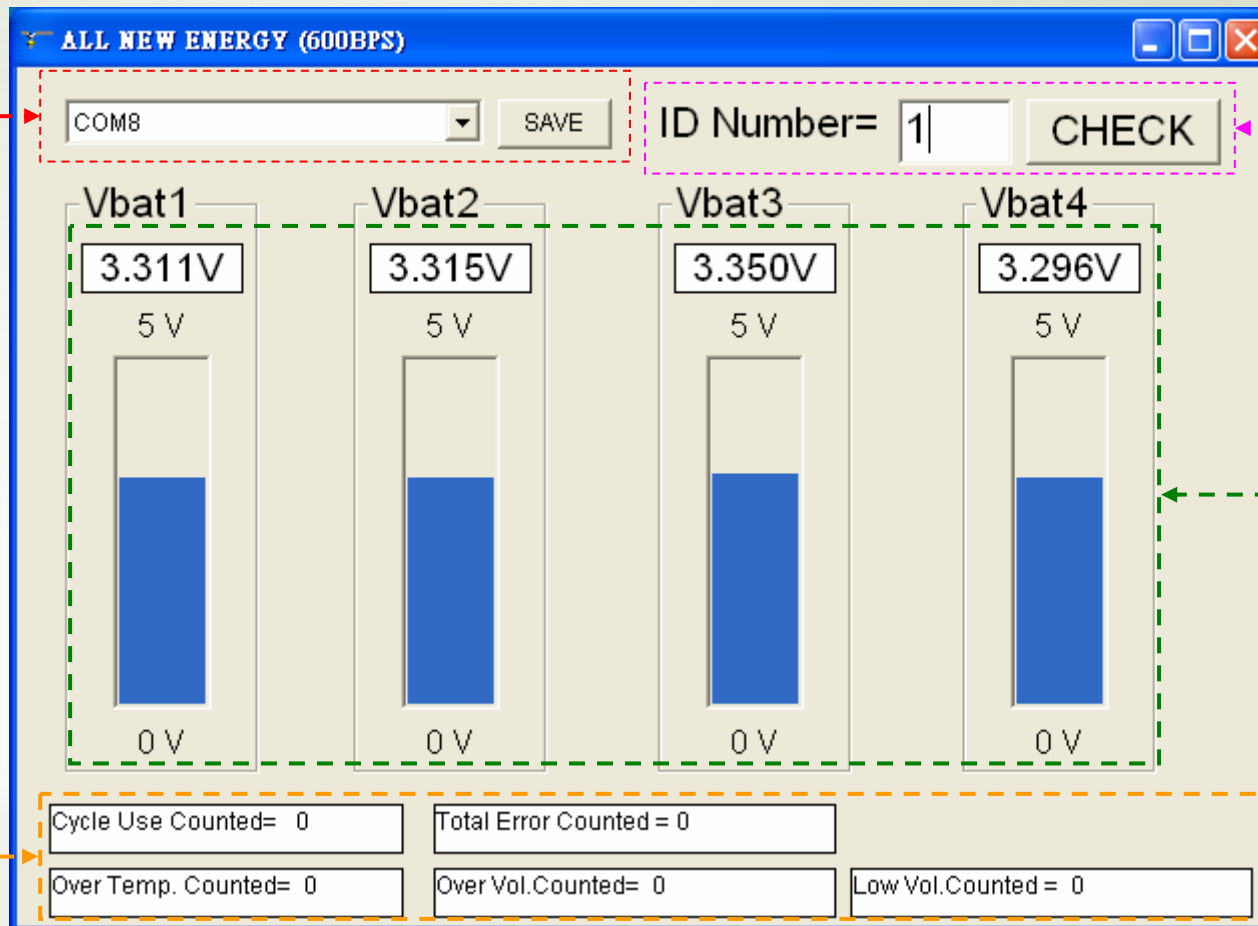
Date : 2008 / 08/ 14

Edit by : Chris Lee

Diagnostic program (DP)

COM port Setting area

VMS ID Setting area



Counter status area

Voltage display area

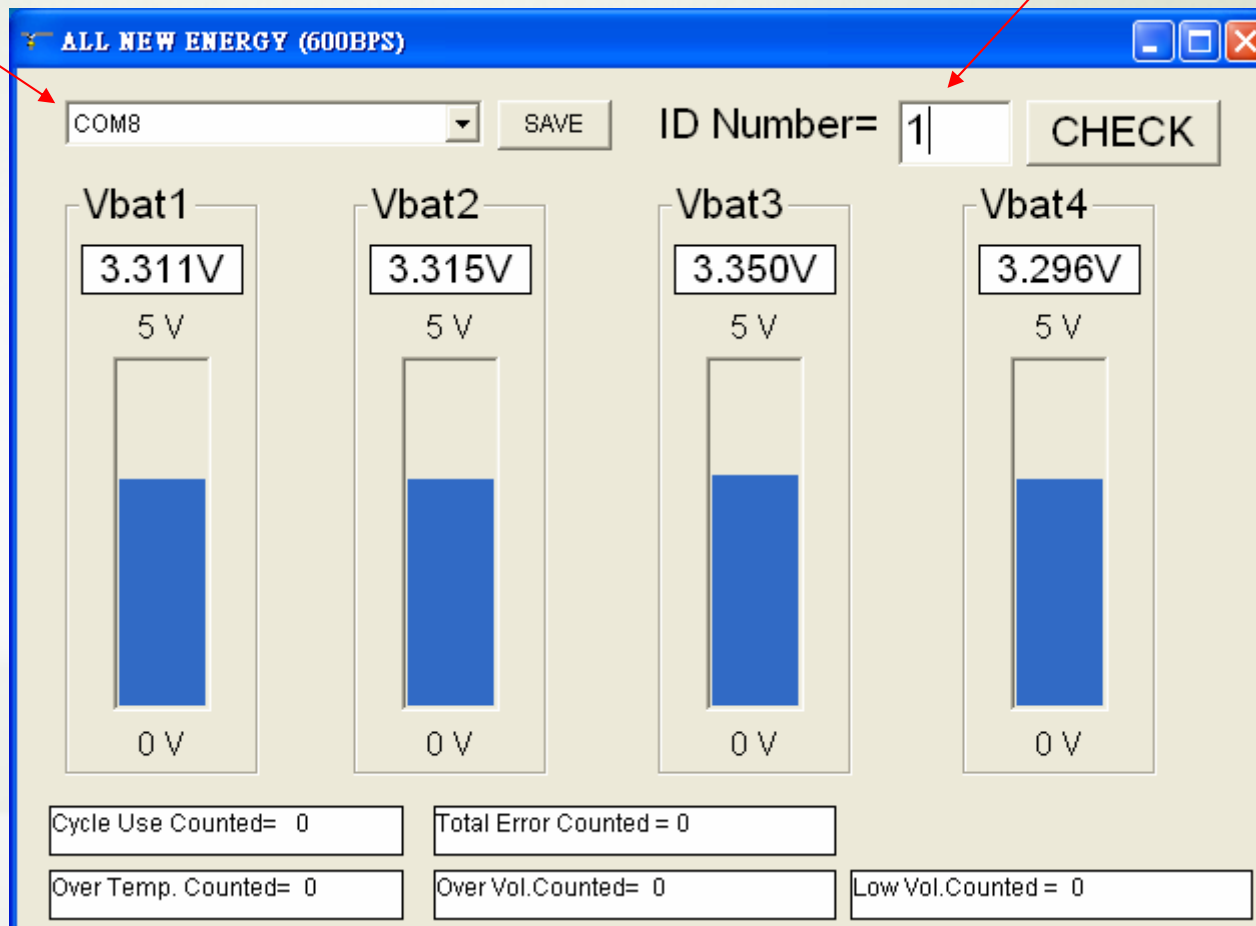
Diagnostic program (DP)

Step 1:

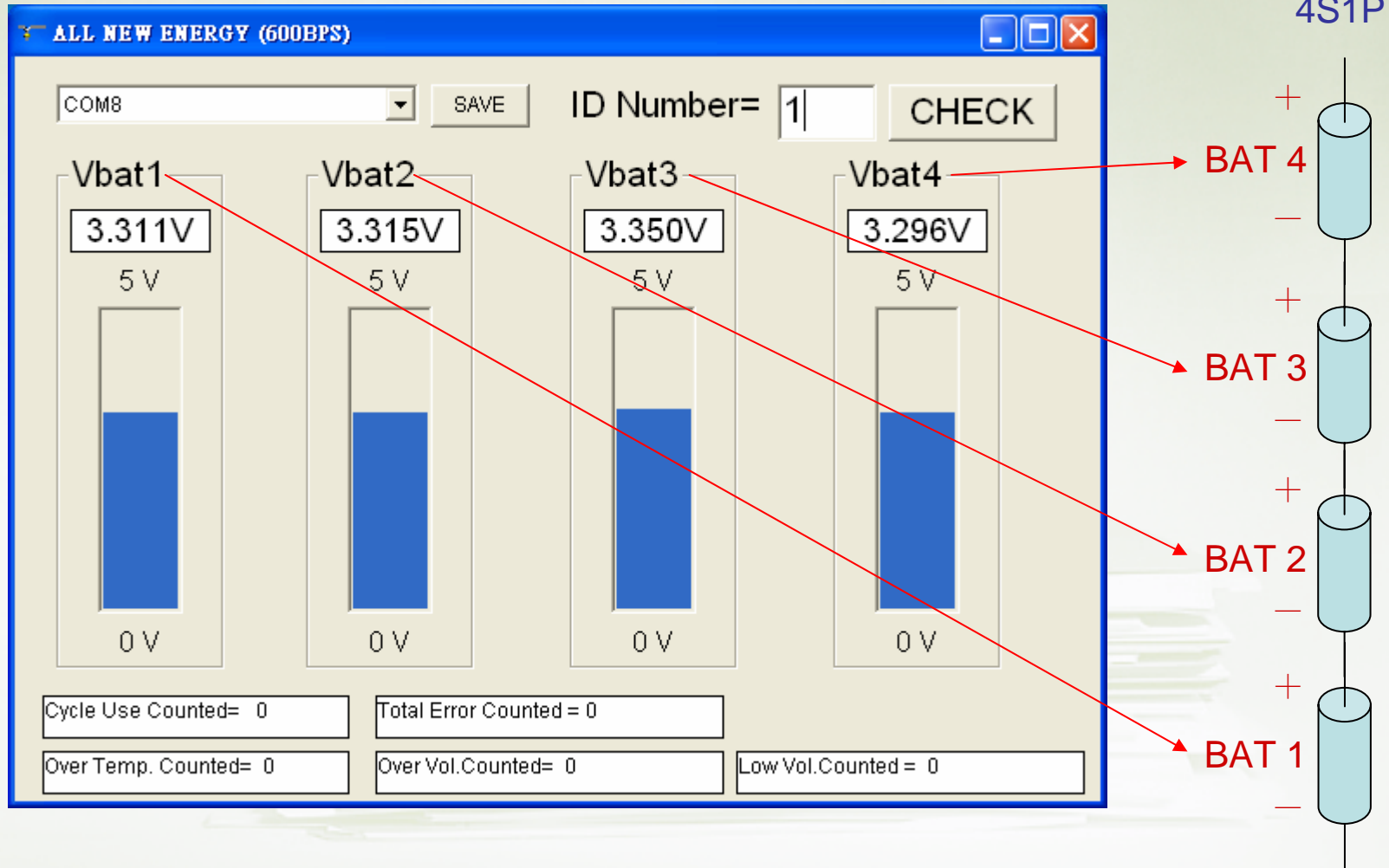
Set Com port and click [SAVE] key.

Step 2:

Set VMS ID number.



Correspondence





Ddiagnostic program Q&A

Q : Whether this diagnostic program is compatible to all of Windows' OS?

A : It is compatible to Win2K/XP.

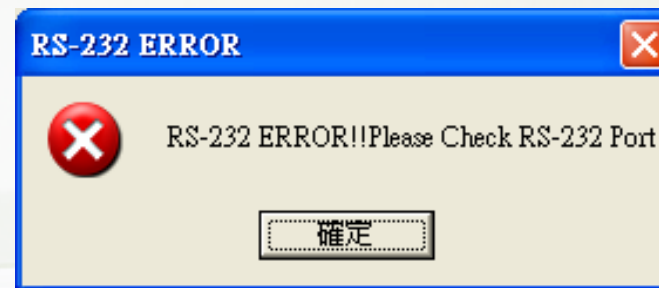
Q : After install this program, how can I launch it?

A : Please just click "start→all programs→  , or just click the icon of 

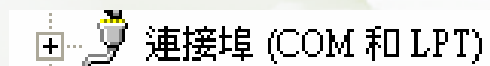
Q : What kind of interface is available?

A : RS-232 and USB , but only dedicated converter is available.

Q : Why I see such error message?



A : It remind user "wrong Com port setting. Please note that the default Com port is Com1. If necessary, please click " control panel→system→Hardware setting→



Diagnostic program Q&A

Q : Why there is a error message as I input a specified ID?



A : It is to remind user the program found duplicate VMS ID. Please verify your ID setting.

Q : Why there is no response, I means all blank, after I input a specified ID?

A : The specified ID may be not available, please verify your ID setting.

Q : How about available ID?

A : It is available from 0~255.

Q : How about available Com port?

A : It is available from Com1 to Com20.

Q : Whether this diagnostic program is able to automatic record data? If yes, what is its format?

A : Yes! And it supports both txt-format and xls-format (Excel).